



the aura

Elevated Living · Grounded in Nature



the
aura

Elevated Living · Grounded in Nature



Elevated Living. Grounded in Nature.

Nestled in Jagatpura, the rising gem of South Jaipur, The Aura offers 1, 2 & 3 BHK luxurious residences where modern comfort seamlessly blends with the serenity of nature. Designed for a healthier, greener lifestyle, every home is a sanctuary of fresh air, open spaces, and effortless living.





Lush Living. Grounded in Nature.

At The Aura, life flows in harmony with nature. Wake up to the whisper of leaves, breathe in crisp morning air, and stroll under a canopy of trees. Every step is surrounded by greenery, every moment nurtured by serenity, and each day enriched by nature's embrace.

Rising South Jaipur. Grounded in Nature.

South Jaipur is on the rise—a hub of growth, connectivity, and endless possibilities. Living here means being part of a thriving future while staying close to nature.

IT & Tech Hub: Stay ahead in a city shaping tomorrow, with top IT parks and tech hubs just minutes away.

Education Hub: Give your family the best, with renowned schools and universities within easy reach.

Healthcare Excellence: Live with peace of mind, knowing world-class hospitals and medical facilities are always nearby.

Business Growth: Whether you're an entrepreneur or a professional, South Jaipur offers endless opportunities for success.





Location Map.

- Travelling
- Airport terminal 1 - **14 Mins**
 - Gator Jagatpura Railway Station - **12 Mins**
 - Khatipura Railway Station - **14 Mins**
 - Ring Road Corridor - **5 Mins**

- Healthcare
- Bombay Hospital - **5 Mins**
 - Mahatma Gandhi Hospital - **14 Mins**
 - Jeevan Rekha Hospital - **8 Mins**
 - Asian Cancer Hospital - **7 Mins**

- Early Education
- Jankidevi Public School - **10 Mins**
 - Ryan International School - **25 Mins**
 - Jayshree Periwal Global School - **9 Mins**
 - Kulish School - **5 Mins**

- Higher Education
- Poornima Engineering College - **10 Mins**
 - JECRC Engineering College - **10 Mins**
 - Suresh Gyan Vihar University - **15 Mins**

- Shopping
- Pinkwalk - **7 Mins**
 - Vivacity - **7 Mins**
 - D-mart - **7 Mins**

1 | 2 | 3 BHK
Luxe Green Apartments



75% Open Green Area

Nature's Abundance. Grounded in Nature.

With **75%** open spaces, The Aura offers homes filled with light, air, and greenery. Stroll through wide walkways, unwind in landscaped gardens, and embrace a life where modern living and nature exist in perfect harmony—where every living space is brighter, and every breeze feels fresher.



An Entire Floor Dedicated to Naturopathy and Ayurvedic Therapy

Holistic Wellness.
Grounded in Nature.

Step into a space where wellness feels effortless. The Aura's dedicated naturopathy floor brings you closer to holistic healing with natural therapies, meditation spaces, herbal steam rooms, and reflexology paths—a place to restore balance and embrace a healthier way of living.



Panchakarma



Hydrotherapy



Massage Therapy



Mud Therapy



Diet Therapy



Yoga and meditation



Exercise therapy



Herbal therapy



Mind-body therapy

At the Elevated Podium Sky Screen

Community Celebrations. Grounded in Nature.

Experience entertainment like never before with The Sky Screen—a vibrant open-air social hub at the heart of The Aura. Cheer for your team, watch global events, or enjoy movie nights under the stars—every moment becomes a shared celebration, bringing the community together.



Elevated Podium

Elevated Leisure. Grounded in Nature.

Rise above the ordinary with 16,000 sq. ft. of lush, elevated greenery on the podium. This expansive recreational oasis is designed for relaxation, play, and connection—where every step feels refreshing, every moment is unwinding, and nature is always within reach.



The Regal Hall

Grand Celebrations. Grounded in Nature.

Host life's special moments in The Aura's elegant banquet hall, designed to bring people together. With space for 250 guests and complemented by a spacious, well-appointed kitchen, it's the perfect setting for gatherings and celebrations—where every occasion becomes unforgettable, surrounded by warmth, joy, and a touch of nature.



Vitality Hub



Swimming Pool with Poolside Deck



Jogging & Cycling Track



Yoga & Meditation Area



Ice Bath & Steam Room



Reflexology Path

Fit Living.
Grounded in Nature.

Well-being isn't just a routine—it's a lifestyle. At The Aura, fitness meets nature with thoughtfully designed spaces that keep you active, refreshed, and energized.



Cricket Net with Ball Machine



State-of-the-Art Gym



Pickle Ball

Little Haven

A World of Wonder.
Grounded in Nature.

Childhood should be about endless play, laughter, and discovery. Designed to nurture growing minds and active bodies, these thoughtfully crafted spaces bring joy to every little explorer.



Outdoor Kids Play Area



Indoor Kids Play Area



Climbing Wall



Sand Pit



Crèche



Skating Rink

Relaxation Hub

Spaces to Unwind. Grounded in Nature.

A community where every space invites you to pause, relax, and enjoy meaningful moments—whether it's a quiet retreat or time spent with loved ones.



Gazebos & Sit-Outs in
Recreational Areas



Modern Loungers



Fountain with Sculptures



Cabana Sit-Outs



Paved Patio



Senior Citizen
Gup-Shup Area

Limitless Entertainment. Grounded in Nature.

From live performances to cinematic experiences and virtual adventures, The Aura offers spaces where entertainment comes to life.



Amphitheatre & Performance Stage



Home Theatre



VR Game Room

Terrace Tranquility. Grounded in Nature.

Specially designed to embrace the beauty of The Aura, these serene outdoor spaces offer a perfect blend of relaxation and connection with nature—whether it's unwinding under the stars, gathering with friends, or simply enjoying the fresh air.



Star Gazing Area on Terrace



Terrace Barbecue Area



Terrace Seating Area



Terrace Water Body



Landscape Terrace

Sustainable Living.
Grounded in Nature.



EV Charging Points - With 20% of parking spaces dedicated to EVs, residents can enjoy the convenience of hassle-free charging within the community. Designed for a future-ready lifestyle, this ensures seamless and sustainable urban living.



Open Area Lighting with Solar Panels - Harnessing the power of the sun, solar-powered lighting illuminates open spaces, reducing energy consumption and promoting a greener way of life.



The Clubhouse Experience. Grounded in Nature.

The clubhouse at The Aura is more than just a space—it's where energy meets excitement, and every game brings people together. Whether it's a friendly match or a moment of quiet strategy, there's something for everyone to enjoy.



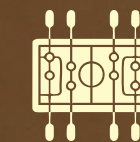
Billiards



Carrom & Chess



Table Tennis



Soccer Table

Secure & Uninterrupted Living. Grounded in Nature.

Every detail at The Aura is designed for your safety, comfort, and peace of mind. From advanced security systems to reliable power backup, experience a home where you feel protected and uninterrupted, every day.



24/7 Security & 3-Tier Security



RFID Access System



MS Door with Motorized Entry



100% Power Backup for Common Areas



1 KW Power Backup in Flats

THE AURA



Thoughtfully Designed. Grounded in Nature.

At The Aura, every detail is crafted to enhance your everyday living—whether it's wellness, convenience, or shared experiences. From spaces designed for relaxation to thoughtful amenities that make life easier, this is a place where comfort meets community.

Over 75+ Amenities.

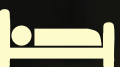
Community & Convenience



Library & Tuition Room



Cafeteria & Co-Working Space



Guest Rooms



Society Office

Wellness & Relaxation



Jacuzzi



Steam Bath

Outdoor & Eco-Friendly Living



Kite Flying Area



Bird Feeding Corner



Vegetable, Fruit, and Dairy Store

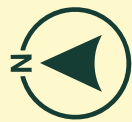


Gas Pipeline for Residences

Here, every space is designed to bring people together, support well-being, and create a truly enriched lifestyle.

Typical Floor Plan

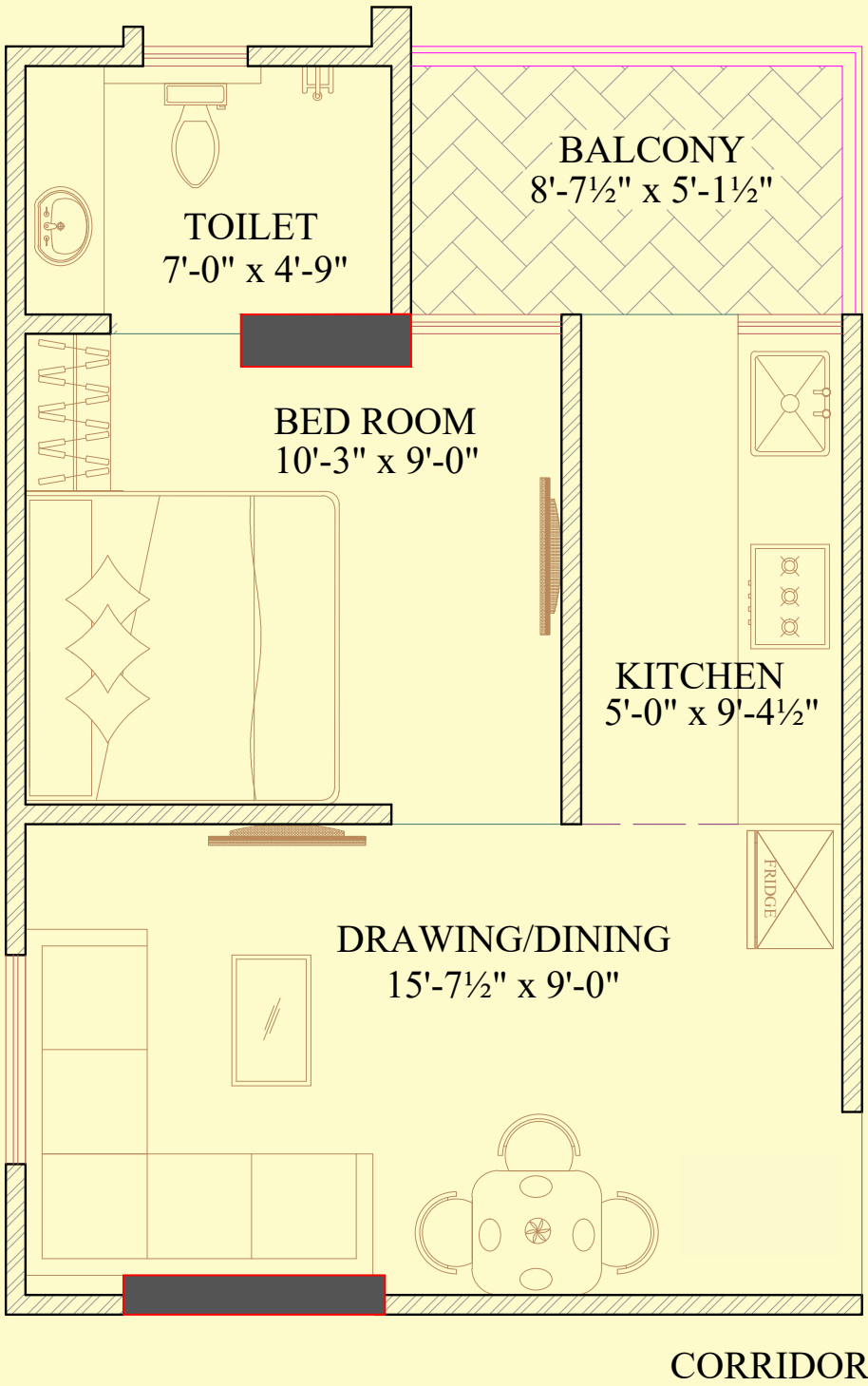
TOWER-B			
S.NO	UNIT	TYPE	SBUA
B1	2 BHK	TYPE 2	1160 SQFT
B2	2 BHK	TYPE 2	1158 SQFT
B3	2 BHK	TYPE 2	1158 SQFT
B4	2 BHK	TYPE 2	1158 SQFT
B5	2 BHK	TYPE 2	1158 SQFT
B6	2 BHK	TYPE 2	1158 SQFT
B7	1 BHK	TYPE 1	549.65 SQFT
B8	1 BHK	TYPE 1	549.65 SQFT
B9	1 BHK	TYPE 1	549.65 SQFT
B10	1 BHK	TYPE 1	549.65 SQFT
B11	1 BHK	TYPE 1	549.65 SQFT
B12	1 BHK	TYPE 1	549.65 SQFT
B13	1 BHK	TYPE 1	549.65 SQFT
B14	1 BHK	TYPE 2	690 SQFT



TOWER-A			
S.NO	UNIT	TYPE	SBUA
A1	3 BHK	TYPE 1	1490 SQFT
A2	2 BHK	TYPE 3	1166 SQFT
A3	2 BHK	TYPE 3	1166 SQFT
A4	2 BHK	TYPE 3	1166 SQFT
A5	3 BHK	TYPE 2	1547 SQFT
A6	2 BHK	TYPE 3	1158 SQFT
A7	2 BHK	TYPE 3	1158 SQFT
A8	3 BHK	TYPE 1	1438 SQFT
A9	2 BHK	TYPE 1	1134 SQFT
A10	3 BHK	TYPE 2	1564 SQFT
A11	3 BHK	TYPE 3	1698 SQFT

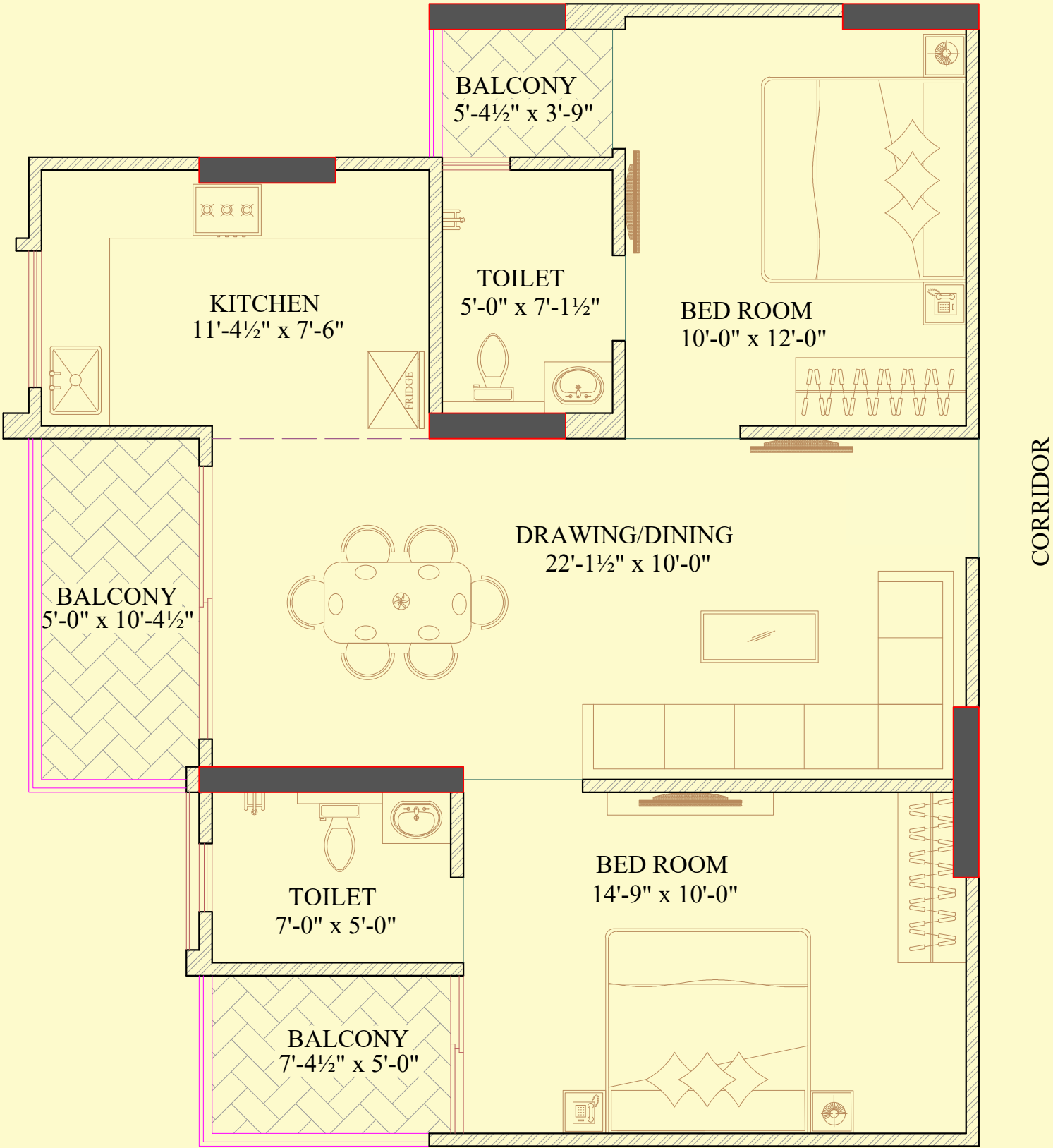
1 BHK

Builtup Area	393.39 Sq.Ft.
Sale Area	549.65 Sq.Ft.
Carpet Area	312.39 Sq.Ft.
Balcony Area	42.30 Sq.Ft.



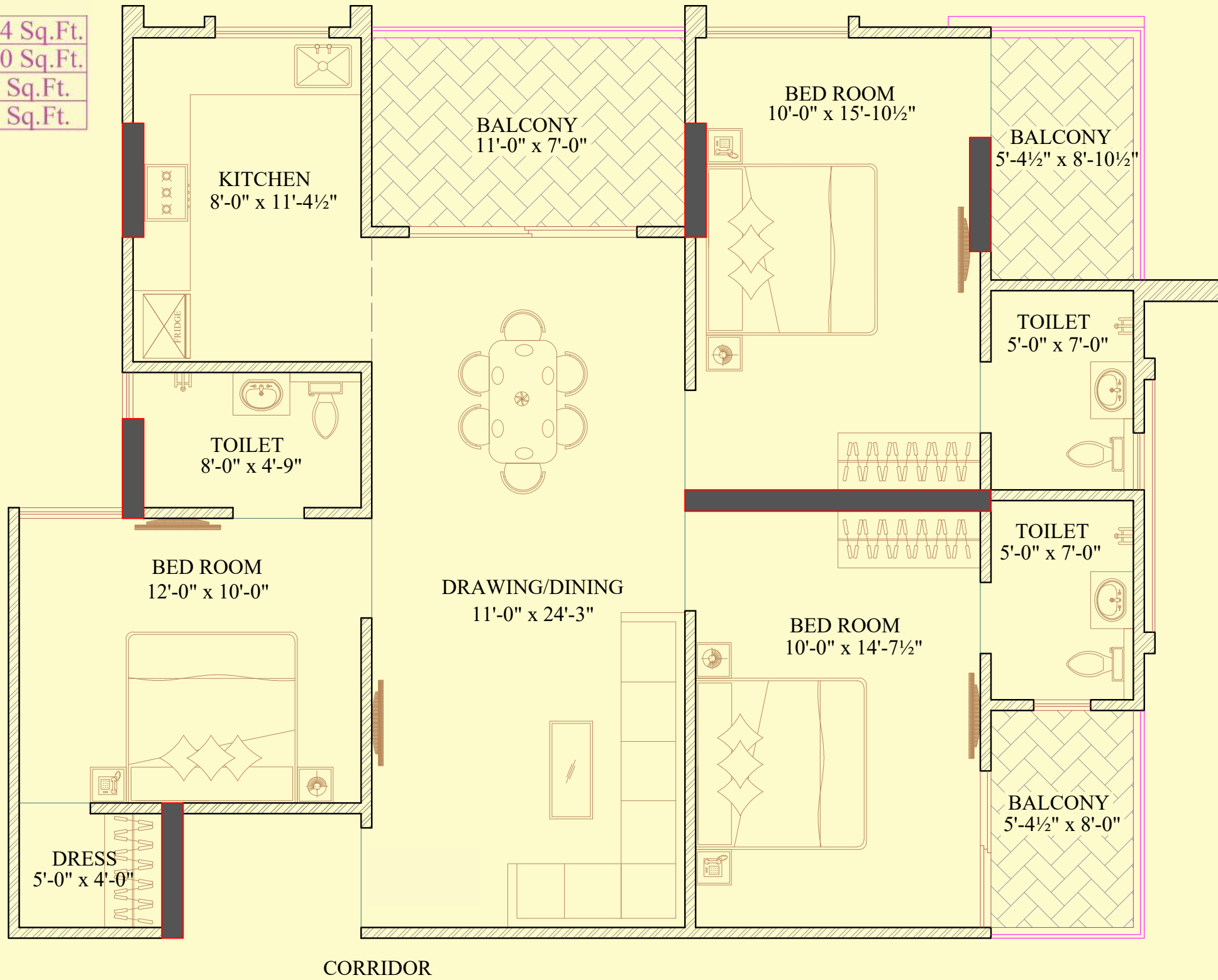
2 BHK

Builtup Area	827.02 Sq.Ft.
Sale Area	1158.00 Sq.Ft.
Carpet Area	684.64 Sq.Ft.
Balcony Area	108.93 Sq.Ft.



3 BHK

Builtup Area	1212.74 Sq.Ft.
Sale Area	1698.00 Sq.Ft.
Carpet Area	965.38 Sq.Ft.
Balcony Area	167.71 Sq.Ft.





The Aura of Trust, Built by Vanshdeep Group.

13+

Years of Experience

18+

Projects Successfully
Delivered

With a strong foundation built on trust and quality, Vanshdeep Builders has been shaping Jaipur's skyline since 2013. From boutique residences to full-scale townships, they have consistently delivered homes that blend thoughtful design with dependable execution.

Driven by a vision to make luxury accessible, Vanshdeep Builders is known for creating vibrant communities with lasting value. With over a decade of experience and a diverse portfolio of residential and hospitality projects, they continue to redefine urban living—one landmark at a time.



VISION 204



Project by:



VANSHDEEP BUILDERS PRIVATE LIMITED

Vanshdeep Tranquil Living Private Limited
In-house facility management, rental and
resale solutions company

Vanshdeep Infra LLP
In-house interior and infra
management company

A-6 Ashish Vihar, RBI Colony, Mahal road, Jagatpura, Jaipur

Ph: +91 - 7428244244

Email: info@vanshdeepbuilder.com

Website: www.vanshdeepbuilder.com

Architect:

SPACE
GRID
ARCHITECTS

Scan for Location

